



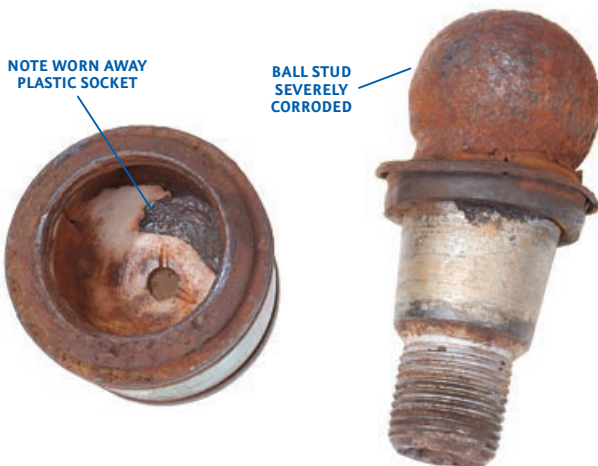
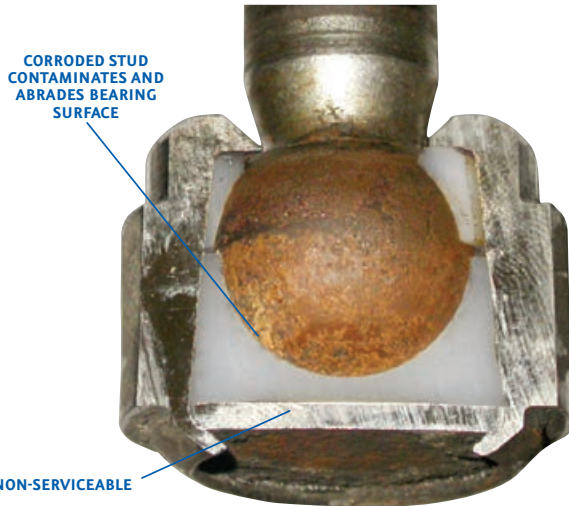
**MOOG®  
ENGINEERED  
GREASEABLE  
DESIGN**

**THE PROBLEM SOLVER®**

**PROBLEM:**

**Premature Failure/Excessive Play/Joint Separation**

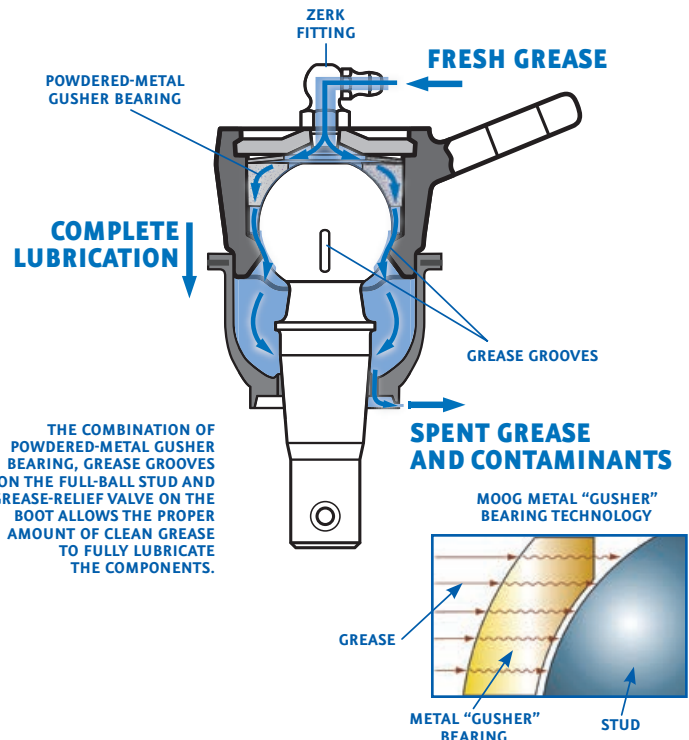
- Non-serviceable socket design is unable to flush away contamination entering into the socket assembly.
- Contamination remains in the assembly, causing corrosion and accelerated wear.



**SOLUTION:**

**MOOG® Greaseable Design**

- Greaseable design works with the MOOG sealed boot to keep contamination away from the socket assembly.
- Porous powdered-metal bearings hold grease between the ball and the bearing.
- Grease grooves in the ball or bearing (depending on application) allow grease flow to critical areas to ensure lubricated ball stud movement and to keep contaminants and wear to a minimum.
- The flow of fresh grease is directed across the bearing surfaces, displacing any accumulated debris away from the ball and bearing assembly.
- The grease-relief valve in the sealed boot shuts out moisture and debris, while ensuring proper fill levels by releasing excess grease away from vital brake components



For parts lookup, visit [www.FMe-cat.com](http://www.FMe-cat.com) | tech line: 1-800-325-8886

[moogproblemsolver.com](http://moogproblemsolver.com)

