

PROBLEM *Solver*[™] BULLETIN

www.moogproblemsolver.com

Front End Steering Shimmy

2005-2008 Ford
F250 Super Duty

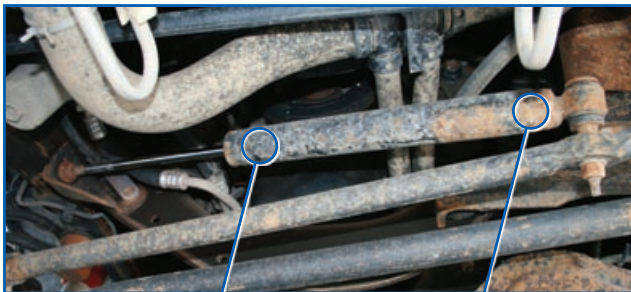
PROBLEM:

Severe front end vibration/shimmy at moderate highway speeds

There are reported problems with severe vibration/shimmy in late-model Ford F250 Super Duty pickup trucks. This is due to failure of the OE steering stabilizer.

The OE design is prone to premature failure and can cause:

- Severe front end shimmy
- Loss of control
- Excessive tire wear



STANDARD PISTON BORE SIZE OF 1"

STANDARD VALVING

Description	Year	Make/Model	Replacement Part Number
Steering Stabilizer	2005-2008	F250 Super Duty	SSD131

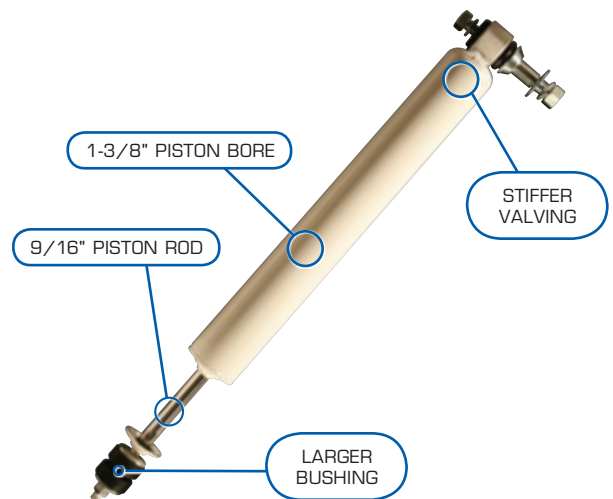
SOLUTION:

MOOG® SSD131 Super Trail Boss Steering Stabilizer



The SSD131 offers a larger bore diameter and tighter valving to eliminate steering oscillation and provide the driver greater vehicle control. Its premium design works well with larger diameter tires and will last longer under severe driving conditions.

- Chromed hardened 9/16" piston rod with 1-3/8" bore
- Stiffer valving provides better dampening
- Larger bushings for longer life
- White powder coat finish
- Enhanced design improves tire and ball joint wear
- Improves control and handling for oversize tires



THE PROBLEM SOLVER™

